

# FORTICRETE®

*innovators in roofing™*

## V2® - EVOLUTION CREATES A REVOLUTION IN ROOF TILE DESIGN



Autumn V2 on a Doctor's surgery in Ilford, Essex.

- Proven in tests to be one of the strongest tiles of its type
- Interlock feature, proven to give better driven rain, and 'ice blocking' performance
- Batten supports to allow free flow of air - keeps battens dry
- Available in 5 colours
- Kitemarked to BSEN 490
- 60 year guarantee
- Available via local stockists



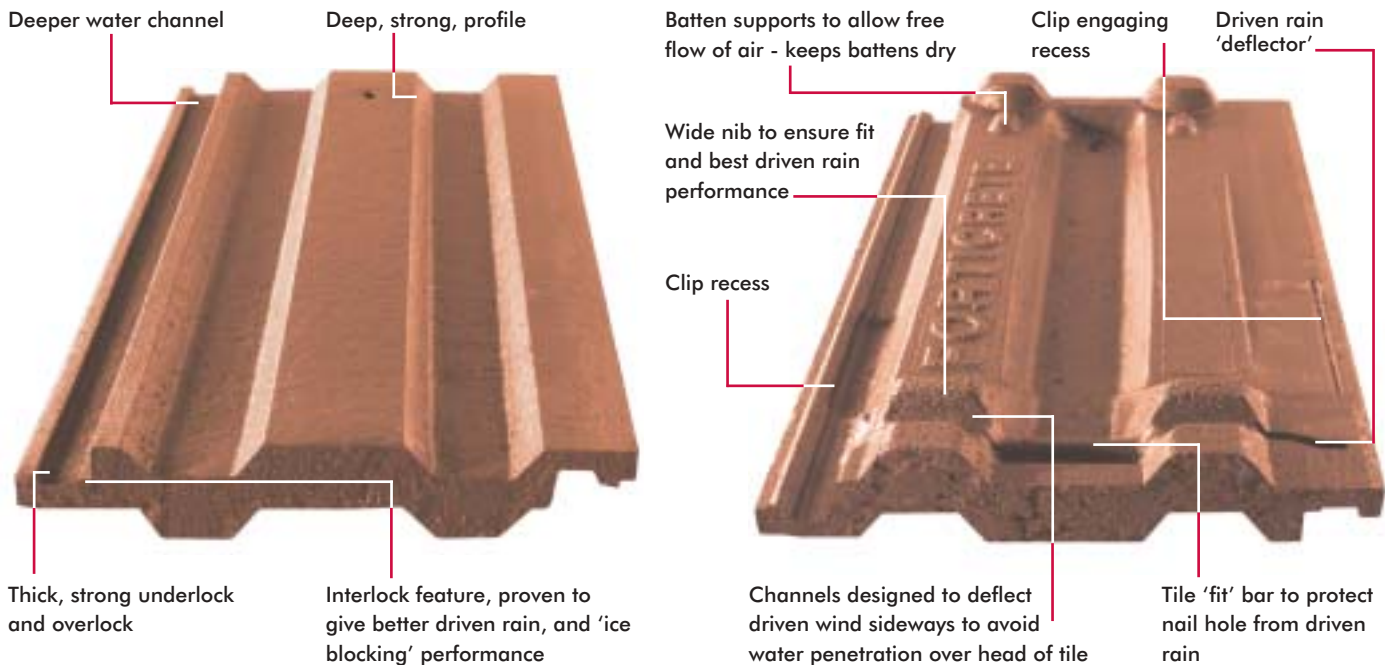
BS EN 490  
Licence No. KM 11083



FORTICRETE® ROOFING PRODUCTS

[www.Forticrete.co.uk](http://www.Forticrete.co.uk)

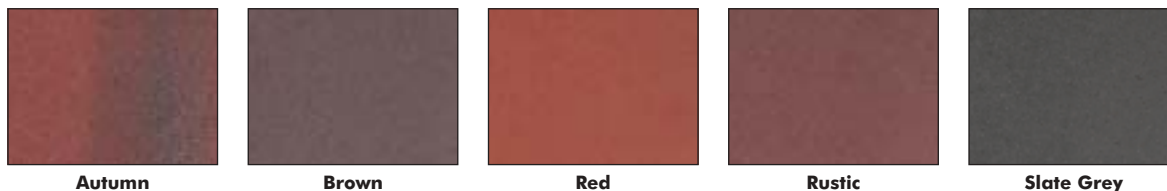
# V2® SPECIFICATIONS



Roof Pitch	Minimum Headlap	Max. Batten Spacing	Battens Required	Tiles Required	Mass (approx)
17.5°-70°	75mm	310mm	3.22 lin m/m <sup>2</sup>	16.1m <sup>2</sup>	46kg/m <sup>2</sup>

**Batten Size:** 38mm x 25mm for spans up to 450mm; 50mm x 25mm for spans from 450mm up to 600mm in accordance with BS 5534:2003.  
**Fixing:** Aluminium Nail 50mm x 3.35mm or Acetol Clip with 50mm Nail

## V2® COLOUR RANGE



**GUARANTEE:** The colour of V2 will change with natural weathering over the years but the integrity of the tiles carries a 60 year guarantee, from date of supply, subject to the company's normal terms. Forticrete Roofing Products' policy is one of continuous improvement and the Company reserves the right to change specifications and designs at any time without notice. The colours reproduced within this brochure are as close as the photographic and printing processes will allow. **Where an exact colour match is critical, you are advised to view actual tile samples.**

Order your  tiles from:

**Approved stockist**

### Working Procedures, Safety & General Precautions

Tiles should be fixed in accordance with BS 5534:2003. Forticrete recommend that fixers of all slates and tiles regard the products as fragile as stated in BS8000:Pt6:1990 Section 5. During installation of the products, the correct setting out and working procedures should be employed to avoid walking directly on to products which have been fixed or are on any completed area of a roof. Should it be necessary to gain access via the roof where battens of adequate strength cannot be used as footholds, this should not be attempted without the use of adequate protection to the tiles or slates including the required number of crawling boards, ladders and cat ladders. Please note that where there is a change of pitch, packing may be required between crawling boards, cat ladders and the surface of the tiles or slates to avoid damage to the product. Fixers should note that Forticrete do not recommend the practice of cutting tiles or slates in-situ. Other information can be obtained from the Health and Safety in Roofwork publication HSG33 and document IND G284. Reference should also be made to the Forticrete Technical Literature and Fixing Instructions.



For sales & product enquiries contact: Forticrete Ltd.,  
 Boss Avenue, Off Grovebury Rd, Leighton Buzzard, Beds, LU7 4SD  
**Tel: 01525 244900**, Fax: 01525 850432,  
 E-mail: [roofing@forticrete.com](mailto:roofing@forticrete.com)



®FORTICRETE and V2 are registered trademarks of Forticrete Ltd.  
 ©2005 Forticrete Ltd.



For technical information, call the Forticrete Technical Hotline:  
**FREephone 0800 262136**, Fax: 0151 524 1265  
 or E-mail at [Technical@Forticrete.co.uk](mailto:Technical@Forticrete.co.uk)  
 Internet: [www.forticrete.co.uk](http://www.forticrete.co.uk)