

### Product features & benefits

- Available with an integral downpipe
- Low profile design to blend with the roof line
- Slate Grey cap blends with most man-made or natural slates
- Designed to avoid any build up of debris inside the vent
- Clearly marked for cutting to various slate sizes
- Prevents entry of birds and large insects
- No adaptor required to convert to soil ventilation or mechanical extraction using Klover 75/100mm flexipipe

### Area of application

Suitable for:

- 600mm x 300mm (24" x 12") and 500mm x 250mm (20" x 10") double lap slates
- Man-made or natural slate
- For roofs with a pitch of 20°- 70°
- New build or re-roofing situations
- High or low level ventilation

### Material

Rigid PVC

### Colours

Slate grey, matt finish  
Black

### Dimensions

600mm long x 300mm wide x 75mm deep (including downpipe)

### Weight (per carton)

11.3kg

### Packaging

10 vents per carton  
10 cartons per pallet

### Product codes

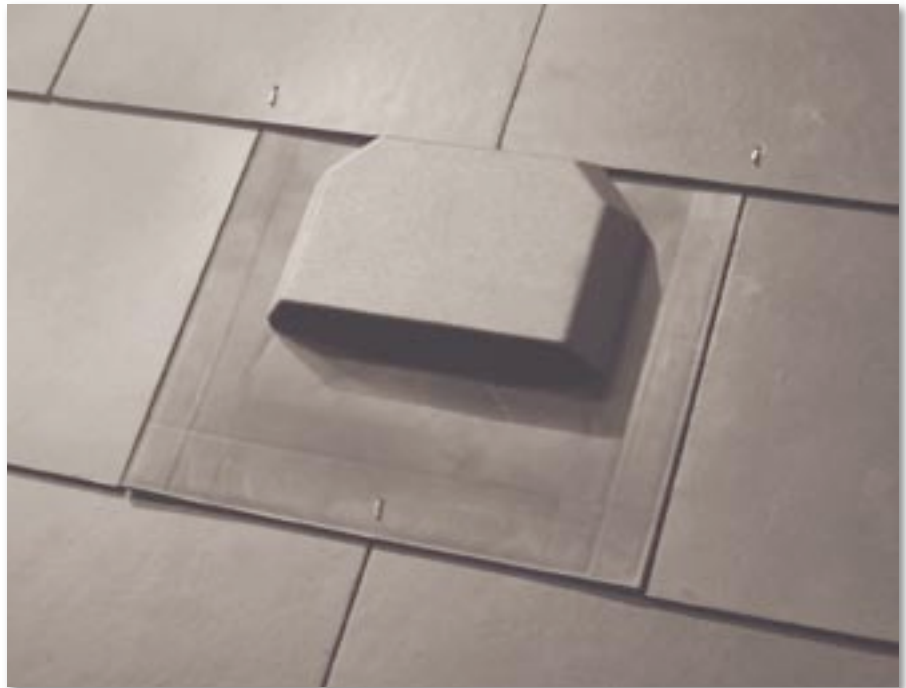
Small Slate Vent/black KG972276  
Small Slate Vent/slate grey KG972200  
Flexipipe only KG972400

### Regulations and certifications

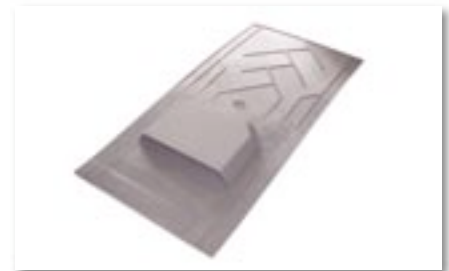
Complies fully with relevant Building Regulations and British Standards.

### Related products

When used as high level ventilation, this product should be used in conjunction with Klover eaves ventilation products such as Easy-Fit Soffit Strips, Soffit Vents or Fascia Vents



The Small Slate Vent, with the integral downpipe, can also be used for soil ventilation or mechanical extraction when used with a 75/100mm Flexipipe.



### Installation

The Slate Vent is positioned as standard and a hole is cut in the roofing underlay directly below the vent cap position. The two lower slates are trimmed to allow the pipe to pass through between them and centre nailed in position. The Slate Vent is positioned through the hole in the slates and centre nailed. NB. If using 500 x 250mm slates cut away the side sections of the Slate Vent shown by guidelines on the underside. For headlaps in excess of 100mm cut off the front section shown by the guideline on the underside. Slating is continued as normal.

Full instructions are provided with each product.

### Performance

Provides 4,500 mm<sup>2</sup> effective ventilation area

Vent spacing	5,000 mm <sup>2</sup> /m	install at 0.9 m centres
	10,000 mm <sup>2</sup> /m	install at 0.45 m centres
Airflow resistance	15 litres/sec	22 Pascals
	30 litres/sec	88 Pascals
	60 litres/sec	352 Pascals